

AVENIR - POD 16

BEING A REPLAT OF A PORTION OF PARCEL A-1, AVENIR, AS RECORDED IN PLAT BOOK 127 PAGE 85, TOGETHER WITH A PORTION OF TRACT RBE 6, AVENIR - POD 15, AS RECORDED IN PLAT BOOK 134 PAGE 179, TOGETHER WITH A PORTION OF TRACT RBE 4, AVENIR - SPINE ROAD 6, AS RECORDED IN PLAT BOOK 135 PAGE 189, ALL OF THE PUBLIC RECORDS OF PALM BEACH COUNTY, FLORIDA LYING IN SECTIONS 8 AND 9, TOWNSHIP 42 SOUTH, RANGE 41 EAST, CITY OF PALM BEACH GARDENS, PALM BEACH COUNTY, FLORIDA.

THIS INSTRUMENT PREPARED BY
 RONNIE L. FURNISS
 OF
CAULFIELD and WHEELER, INC.
 SURVEYORS - ENGINEERS - PLANNERS
 7900 GLADES ROAD, SUITE 100
 BOCA RATON, FLORIDA 33434 - (561)392-1991
 CERTIFICATE OF AUTHORIZATION NO. LB3591
 SEPTEMBER 2023

177

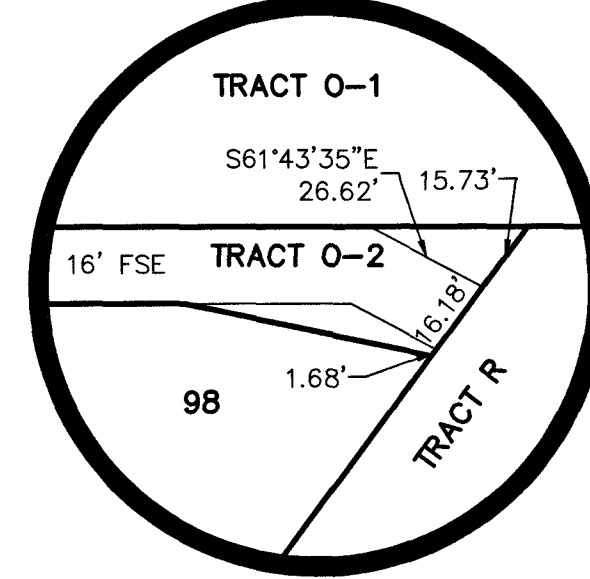
STATE OF FLORIDA
 COUNTY OF PALM BEACH
 THIS PLAT WAS FILED FOR
 RECORD AT _____ M.
 THIS _____ DAY OF _____
 A.D. 2023 AND DULY RECORDED
 IN PLAT BOOK _____ ON
 PAGES _____ THROUGH _____

JOSEPH ABRUZZO
 CLERK OF THE CIRCUIT COURT
 AND COMPTROLLER

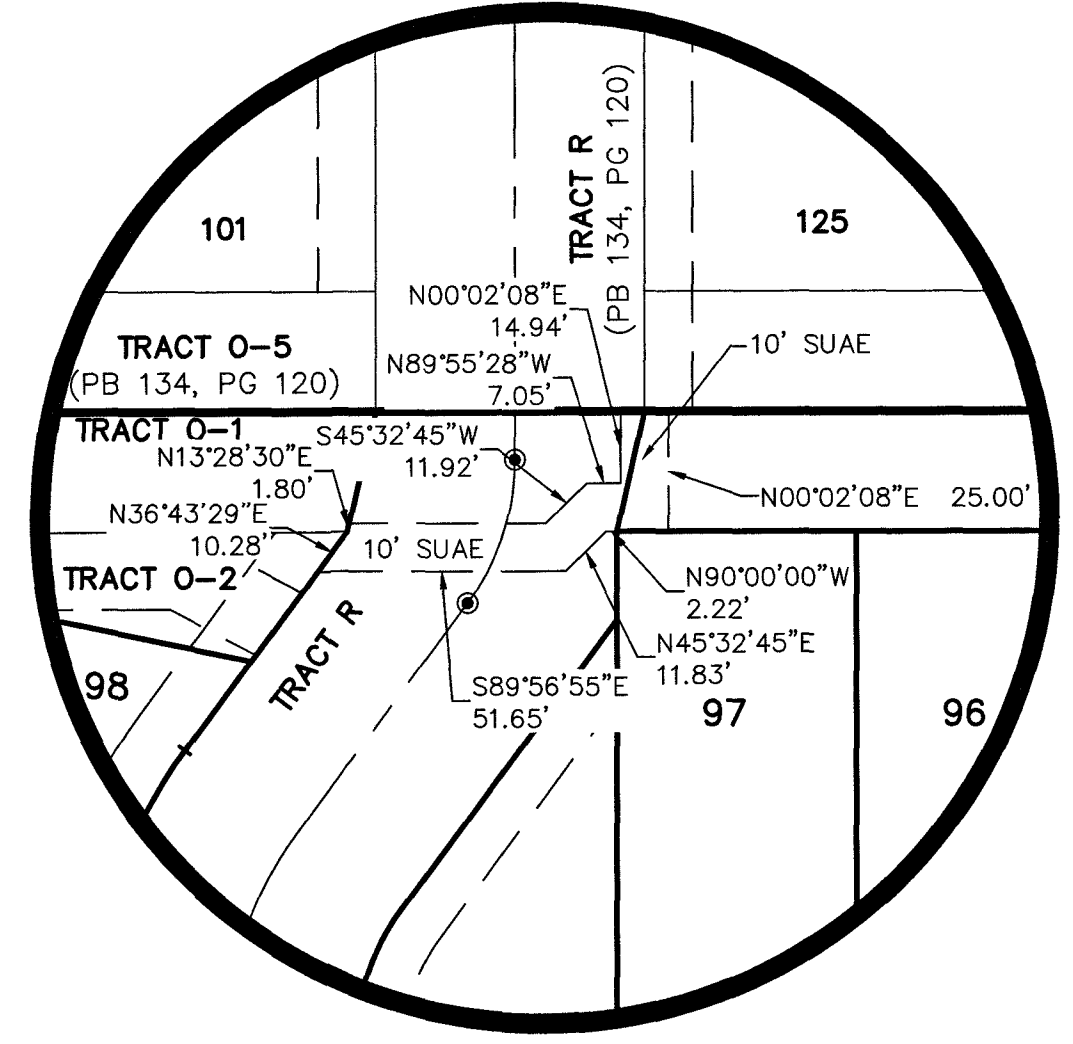
BY: _____
 DEPUTY CLERK

SHEET 10 OF 16

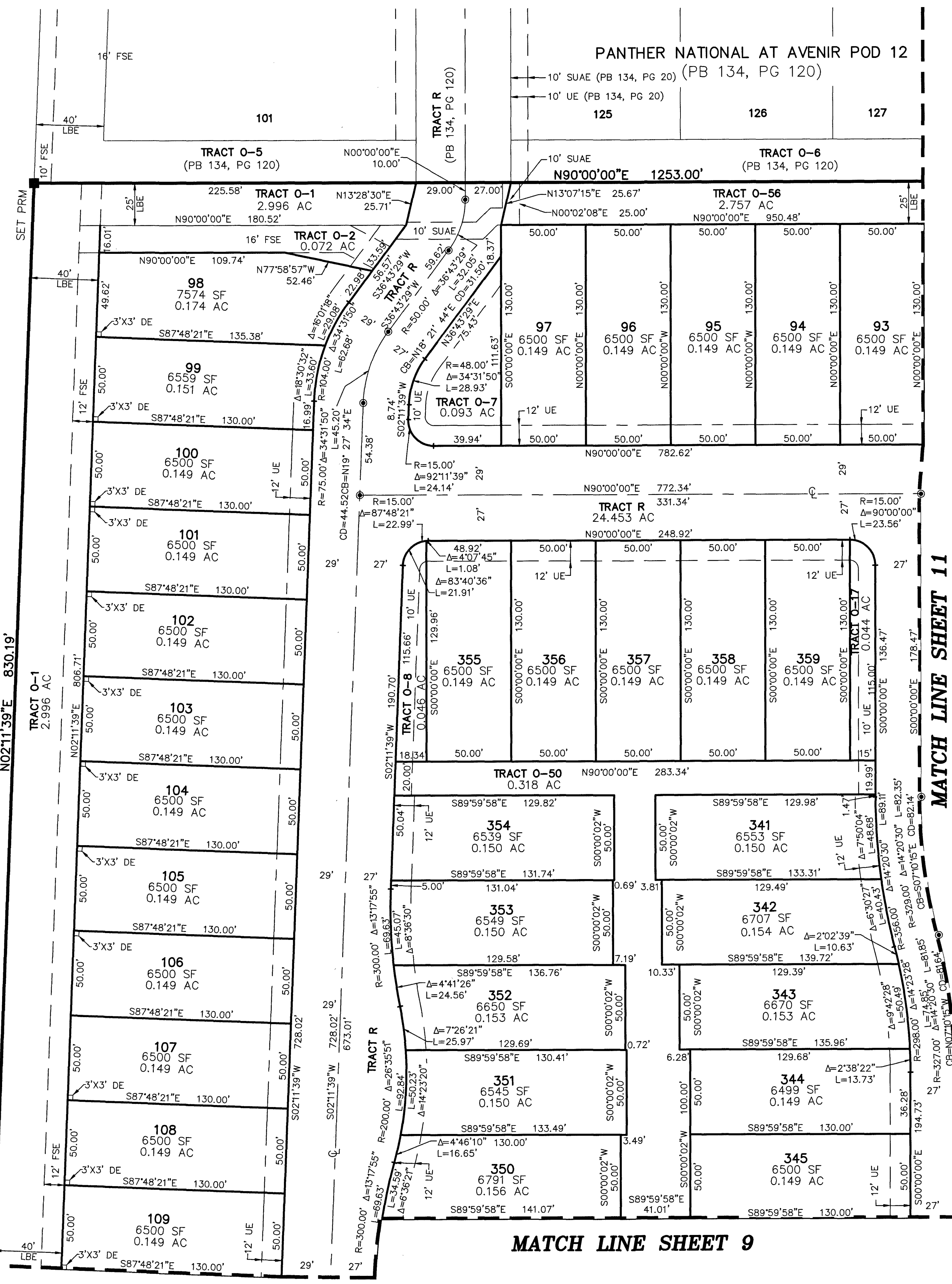
FSE DETAIL



SUAE DETAIL

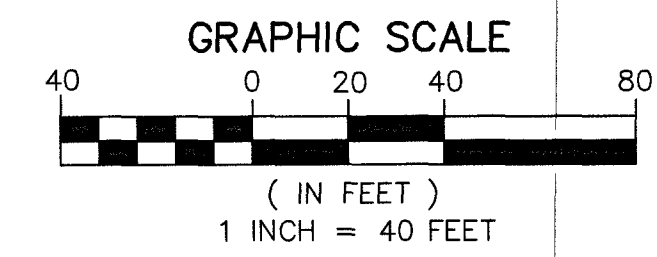
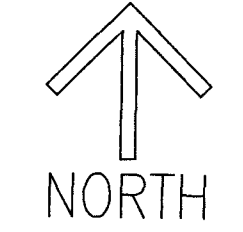
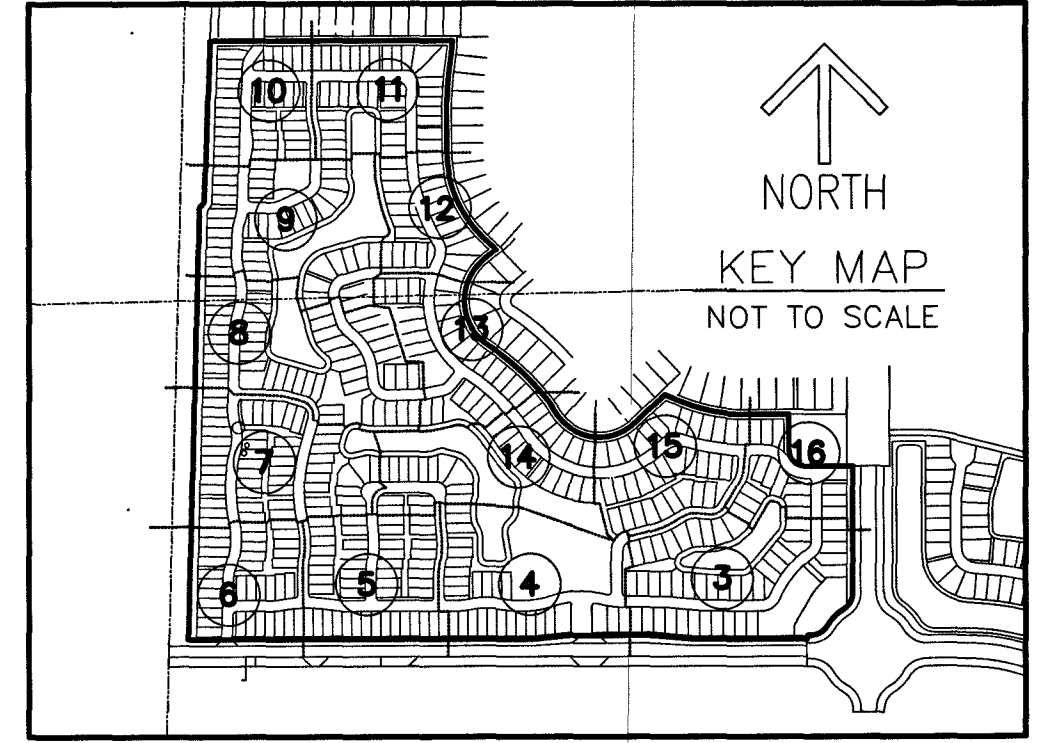


CONSERVATION AREA
 TRACT C-1
 (PB 127, PG 85)
 (ORB 25564, PG 1325)
 AMENDED
 (ORB 32683, PG 296)



MATCH LINE SHEET 11

MATCH LINE SHEET 9



- LEGEND/ABBREVIATIONS**
- CL - CENTERLINE
 - Δ - DELTA (CENTRAL ANGLE)
 - AC - ACRES
 - CB - CHORD BEARING
 - CD - CHORD DISTANCE
 - DE - DRAINAGE EASEMENT
 - EAE - EMERGENCY ACCESS EASEMENT
 - FSE - FIRE SAFETY ACCESS EASEMENT
 - IEE/UE - INGRESS EGRESS UTILITY EASEMENT
 - L - ARC LENGTH
 - LAE - LIMITED ACCESS EASEMENT
 - LB - LICENSED BUSINESS
 - LBE - LANDSCAPE BUFFER EASEMENT
 - LSE - LIFT STATION EASEMENT
 - O.R.B. - OFFICIAL RECORD BOOK
 - PB - PLAT BOOK
 - PG - PAGE
 - P.P.A.E. - PERPETUAL PUBLIC ACCESS EASEMENT
 - R - RADIUS
 - (R) - INDICATES RADIAL LINE
 - RB - INDICATES RADIAL BEARING
 - RBE - ROADWAY BUFFER EASEMENT
 - SF - SQUARE FEET
 - SUAE - SEACOAST UTILITY AUTHORITY EASEMENT
 - UE - UTILITY EASEMENT
 - PRM - DENOTES PERMANENT REFERENCE MONUMENT
5/8" IRON ROD WITH CAP STAMPED "C&W PRM LB 3591"
 - - DENOTES PERMANENT CONTROL POINT
 - ✱ - 1/4 SECTION CORNER
 - ✱ - SECTION CORNER